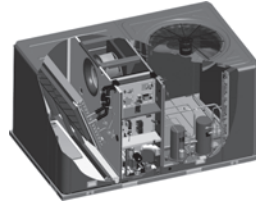


Quick Reference Guide

Precedent™

Cooling and Gas/Electric 3 to 5 Tons 17 Plus Packaged Rooftop Units



Model Number: Used With:

THC**7	High Efficiency Cooling Only (Electric Heat Optional)
YHC**7	High Efficiency Gas Heat Unit

January 2021

RT-PRC050K-EN

© 2021

1

Table 1. List of factory installed options^(a)

0-50% Motorized outside air damper	Human interface - 5 inch color touchscreen
Air-Fi® Wireless Communication Interface	LonTalk® Communication Interface (LCI)
BACnet® Communication Interface (BCI-R)	Manual outside air damper
Barometric relief	MERV 8 filters
Belt drive motor	MERV 13 filters
Black epoxy pre-coated condenser coil	Multiple zone VAV (variable air volume)
Clogged filter switch	Multi-speed indoor fan system
CompleteCoat™ (microchannel condenser coil)	NOVAR 2024 controls
Condensate overflow switch	NOVAR 3051 controls without zone sensor
Crankcase heater	NOVAR 3051 zone sensor
Dehumidification	NOVAR return air sensor
Demand control ventilation wiring	Powered convenience outlet
Discharge air temperature sensing kit	ReliaTel™ controls
Economizer - comparative enthalpy	Single zone variable air volume (SZVAV)
Economizer - dry bulb	Stainless steel drain pan
Economizer - low leak, dry bulb	Stainless steel heat exchanger
Economizer - reference enthalpy	Supply, return, and plenum air smoke detectors
Fan failure switch	Through-the-base electric provision
Fault detection & diagnostics (FDD); Meets CA Title 24 requirements	Through-the-base gas provision
Frostat™	Unit mounted circuit breaker
Hail guard	Unit mounted non-fused disconnect
Hinged access panels	Unpowered convenience outlet
Ultra low NOx gas furnace	

(a) Verify option availability in product catalog.

2

Table 2. High efficiency, 17 Plus, 3 to 5 ton packaged rooftop performance data (gas or electric heat)

Nominal Size (Tons)	3	4	5
Cooling Performance			
High Stage Supply Air (cfm) ^(a)	1,200	1,600	2,000
Low Stage Supply Air (cfm) ^(a)	840	1,120	1,400
Tot /Sens Cap (MBh) ^{(b),(c)}	36.2/26.9	50.0/36.8	60.0/45.3
SEER/EER	17.5	17.5	17.2
IEER	N/A	N/A	N/A
Gas Heating Performance^(d)			
Low Heat (Input/output) - (MBh)	60.0/48.0	60.0/49.0	60.0/49.0
Medium Heat (Input/output) - (MBh)	80.0/64.0	80.0/64.0	80.0/64.0
High Heat (Input/output) - (MBh)	100.0/80.0	120.0/96.0	130.0/104.0
Low Heat (Input/output) if Digit 34 = A for ULN option	60.0/48.6	60.0/48.6	60.0/48.6
Medium Heat (Input/output) if Digit 34 = A for ULN option	NA	90.0/72.9	90.0/72.9
High Heat (Input/output) if Digit 34 = A for ULN option	NA	NA	NA
Other Information			
Net Weight (Lbs) - Gas Heat	606	763	822
Net Weight (Lbs) - Electric Heat	544	692	746
Roof Curb	BAYCURB042A		BAYCURB043A
Unit Cabinet Size	B		C
Filters ^(d) - Type Furnished	Throwaway	Throwaway	Throwaway
Number Size Recommended	(2) 20x30x2	(2) 16x25x2	(2) 16x25x2

(a) Nominal cfm

(b) Cooling performance is rated at 80/67/95

(c) All units listed utilize 3-phase voltage

(d) Optional 2" MERV 8 and MERV 13 filters also available

Table 3. Unit MCA and MOP electrical data (standard indoor fan motor) (gas or cooling)^(a)

T/YHC	Volts	MCA	MOP
037	208-230/3	24	30
037	460/3	12	15
037	575/3	9	15
047	208-230/3	30	40
047	460/3	14	20
047	575/3	11	15
067	208-230/3	33	45
067	460/3	16	20
067	575/3	12	15

(a) For MCA/MOP of units with electric heat, refer to product catalog.

Table 4. Unit indoor fan data (gas or electric heat)

T/YHC	Volts	Standard HP - RPM	Oversize HP - RPM
037	208-230/3 ^(a)	¾ - VARIABLE	—
037	460/3 ^(a)	¾ - VARIABLE	—
037	575/3 ^{(a)(b)}	¾ - VARIABLE	—
047	208-230/3 ^(a)	1 - VARIABLE	—
047	460/3 ^(a)	1 - VARIABLE	—
047	575/3 ^{(a)(b)}	1 - VARIABLE	—
067	208-230/3 ^(a)	1 - VARIABLE	—
067	460/3 ^(a)	1 - VARIABLE	—
067	575/3 ^{(a)(b)}	1 - VARIABLE	—

(a) Direct drive motor

(b) 575V rated units utilize a high efficiency 230 evaporator fan motor powered through a 575/230V transformer. Motor voltage/FLA rated at transformer input.

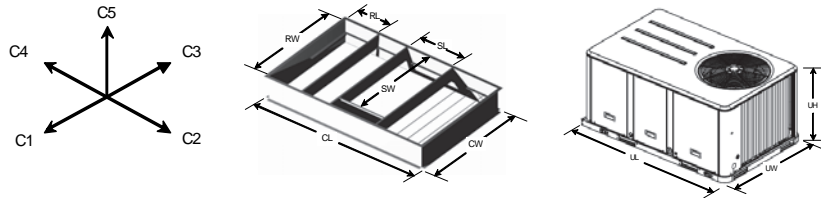


Table 5. Unit dimensional data

	B	C
Unit Length UL	69 7/8	88 5/8
Unit Width UW	44 1/4	53 1/4
Unit Height UH	36 1/4	40 7/8
Clearance C1	48	48
Clearance C2	36	36
Clearance C3	36	36
Clearance C4	36	36
Clearance C5	72	72
Curb Length CL	65 13/16	84 1/2
Curb Width CW	41 7/16	50 3/8
Supply Length SL ^(a)	16 3/4	18 1/2
Supply Width SW ^(a)	17 7/8	34 3/8
Return Length RL ^(a)	14 9/16	18 1/4
Return Width RW ^(a)	25 3/16	34 3/8

(a) Dimensions are for curb openings and not duct inserts. Reference the product catalog for duct insert dimensions.

Trane and American Standard create comfortable, energy efficient indoor environments for commercial and residential applications. For more information, please visit trane.com or americanstandardair.com.

Trane and American Standard have a policy of continuous product and product data improvement and reserve the right to change design and specifications without notice. We are committed to using environmentally conscious print practices.