

SuperMod™ by Arctic



A newly developed and highly flexible thermal distribution system that provides chilled water and hot water simultaneously.



Super
Efficient



Super Quiet
Design



Scalable
Flexibility

- Super Efficient – All or lead compressor variable speed permanent magnetic motor scroll compressors and condenser fans for unparalleled efficiency and operating range in a modular platform
- Quiet – Sound levels are extremely low and will reduce further with unloading
- Capacity Range - 10-60 Tons and expandable up to 960 Tons
- Available for air-cooled and water-cooled applications
- Latest generation open protocol controller allowing for remote monitoring
- Heat Recovery heat exchanger is available in both water and air cooled
- Integrated free cooling coils are now available to reduce overall footprint for the bank
- Optional copper/copper or phenolic coated condenser coils
- Optional integrated pumping and specialties with variable primary logic and hardware available
- True variable speed modules featuring a matched set of magnetic motor scroll and variable speed drive



Air Cooled Variable Speed Scroll Model Configurations

Model	Description	Cabinet Dims
PACVMV0200T*-MM-VS	20 Ton, tandem compressor, VFD lead comp	32" W x 76" L x 76" H
PACVMV0250T*-MM-VS	25 Ton, tandem compressor, VFD lead comp	39" W x 95" L x 79" H
PACVMV0300T*-MM-VS	30 Ton, tandem compressor, VFD lead comp	39" W x 95" L x 79" H
PACVMV0400T*-MM-VS	40 Ton, tandem compressor, VFD lead comp	48" W x 95" L x 79" H

* 3-208/230/3/60, 4-460/3/60, 5-575/3/60.

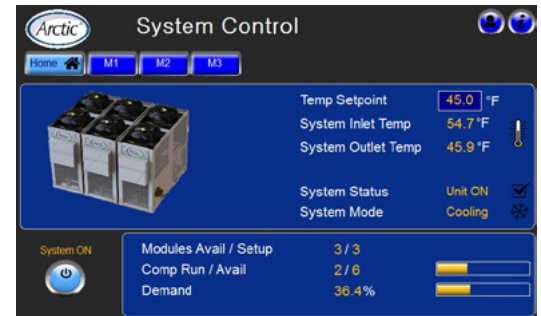
E&OE

Water Cooled Variable Speed Scroll Model Configurations

Model	Description	Cabinet Dims
PWCCMV0150T*-MM-VS	15 Ton, tandem compressor, VFD lead comp	24" W x 66" L x 76" H
PWCCMV0200T*-MM-VS	20 Ton, tandem compressor, VFD lead comp	24" W x 66" L x 76" H
PWCCMV0250T*-MM-VS	25 Ton, tandem compressor, VFD lead comp	24" W x 66" L x 76" H
PWCCMV0300T*-MM-VS	30 Ton, tandem compressor, VFD lead comp	24" W x 66" L x 76" H
PWCCMV0400T*-MM-VS	40 Ton, tandem compressor, VFD lead comp	34" W x 66" L x 76" H

* 3-208/230/3/60, 4-460/3/60, 5-575/3/60.

E&OE



Master PLC controller complete with individual fail-safe controllers on each module

Learn more at trane.com



Trane – by Trane Technologies (NYSE: TT), a global climate innovator – creates comfortable, energy efficient indoor environments through a broad portfolio of heating, ventilating and air conditioning systems and controls, services, parts and supply. For more information, please visit trane.com or tranetechnologies.com.

All trademarks referenced in this document are the trademarks of their respective owners.

© 2020 Trane. All Rights Reserved.

ARTC-SLB004-EN
07/09/2020