



PRIMER

Inverter



HIGH EFFICIENCY INVERTER

Split System 5-10 Tons DC Motor AHU

Light Commercial

TYH/TYK/TYA R410A Series 50Hz

TRANE
TECHNOLOGIES



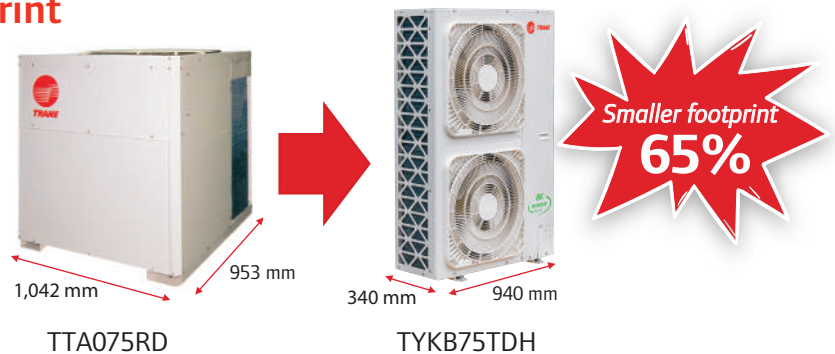
High Energy Efficiency System



- The introduction of a high efficiency DC Inverter compressor driven by the most advanced control technology is designed to provide more precise operation and improved system efficiency to reach maximum SEER 18.0 (averagely improved 60% from Fixed speed type). The compressor speed is adapted to match the fluctuating cooling load of the buildings while ensuring the appropriate variable supply of cooling.

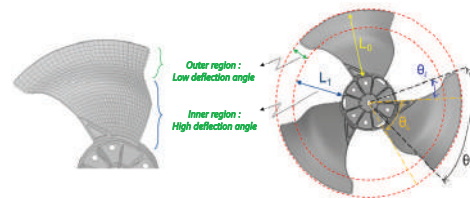
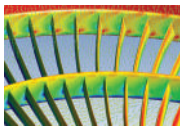
Space Saving with Smaller Footprint

- Trane PRIMER Inverter is designed for smaller condensing unit dimensions to save the installation space at maximum of 65% from current product.



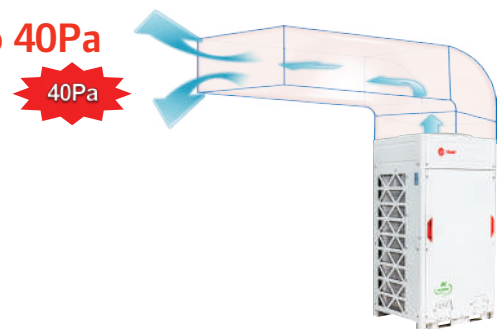
Low Operation Sound Noise

- Trane PRIMER Inverter optimally designed fan shape, new designed discharge air grille and air deflector together supply higher air volume and lower operation sound.



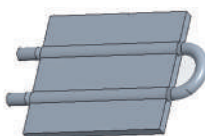
External Static Pressure of Outdoor Units Up to 40Pa

- DC fan motor...outdoor fan. Be adjustable up to maximum 40 Pa which can apply discharge duct for hot air to avoid obstruction in front of the outdoor unit.

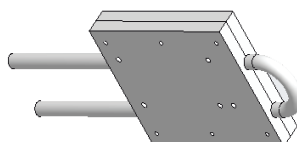


High Reliability with New Refrigerant Cooled PCB Technology

- New full Package for top discharge and Micro Channel Radiator for side discharge design to enhance heat transfer area and decrease temperature by 15 °C.



Old : Crimping



New for Top : Full Package



New for Side : Micro Channel Radiator

Easy service and maintenance

- Self - Diagnostic system shows error codes for the causes of malfunction which help reduce service time.

Completed DOL Starter and Controller

- Factory completed build-in DOL starter and digital wired controller.



Digital Wired Controller
(Standard)



Remote Control (Option)

TYH Air Handling Unit

- For horizontal air discharge.
- Powder paint finished casing.
- Direct drive with DC motor.
- Electronic Expansion Valve.
- Factory installed PCB, DOL starter and display wired controller.
- Suitable for free blow application.



TYH060-075NBH



TYH120NBH

TYK/TYA Condensing Unit

- Powder paint finished casing.
- External current overload for compressor, Hi/Low pressure, temperature protection, phase protection (Missing phase/Phase loss/Under and Over voltage protection).
- Fully charged R410A refrigerant with shut-off valve.



TYKB60-75TDH



TYA120JDH

Product Specifications

UNIT MODELS	Indoor unit		TYH060NBH	TYH075NBH	TYH120NBH
	Outdoor unit		TYKB60TDH	TYKB75TDH	TTA120JDH
Performance Data	Cooling Capacity (Min-Max)	Btu/h	60,000 (30,000-65,000)	75,000 (35,000-80,000)	120,000 (50,000-130,000)
	SEER	Btu/h/W	18	18	18
	Nominal Airflow	CFM	2,000	2,500	4,000
System Data	Refrigerant Type		R410A (Fully charged)		
	No. of Refrigerant Circuits		1	1	1
	Refrigerant Connection Type		BRAZE	BRAZE	BRAZE
	Suction Line OD	in (mm)	7/8"	7/8"	1 1/8"
	Liquid Line OD	in (mm)	3/8"	3/8"	1/2"
	Drain Connection Size	in (mm)	1 (25.4)	1 (25.4)	1 (25.4)
	Drain Connection Type		Steel Pipe - MPT		
Indoor Units					
Electrical Data	Power Supply	V/Ph/Hz	220-240/1/50		
Flow Control	Type		Electronics Expansion Valve		
Fan	Fan Type		Double Inlet Centrifugal with Forward Curved Wheel		
	Qty		1	1	2
	Drive Type		Direct Drive		
Fan Motor	Type		DC Motor		
	Output	kW	0.55	0.55	0.55
	Qty x RLA	A	3.81	3.81	2x3.81
Air Filter	Type		1- In Washable Aluminium Air Filter		
Dimensions (HxWxD)	Unit (Net)	mm	520x1,465x916		620x1,833x916
Weight	Unit (Net)	kg	90	94	143
Outdoor Units					
Electrical Data	Power Supply	V/Ph/Hz	380-415/3/50		
Compressor	Type		Twin Rotary DC Inverter		Scroll DC Inverter
	Qty x RLA		9.80	13.91	20.25
Fan	Fan Type		Propeller		
	Hot Air Discharge Direction		Horizontal (Front)		Vertical (Top)
	Qty		2	2	1
Fan Motor	Type		DC Motor		
	Output	Watt	100	250	750
	Qty x RLA	A	2 x 1.26	2 x 1.35	3.43
Dimension (HxWxD)	Unit (Net)	mm	1,430x940x340		1,720x925x785
Weight	Unit (Net)	kg	102	113	215

Note: 1. Capacity is rated at ARI conditions of 80 °FDB /67 °FWB for Indoor & 95 ° FDB for Outdoor.
2. Outdoor unit dimensions depth is not included the dimensions of unit's legs.
3. Product design and specification are subject to change without notice.



เทรน (ประเทศไทย)

เลขที่ 1126/2 ชั้น 30-31 อาคารวานิช 2 ถนนเพชรบุรีตัดใหม่ แขวงมักกะสัน เขตราชเทวี กรุงเทพฯ 10400

☎ 0-2761-1111

