



# YUKON

*Split System Air Conditioner*

*36,000 - 240,000 Btu/h Tall Floor Model*

*MCV R32 & R410A Series 50Hz*

TRANE  
TECHNOLOGIES



# YUKON - Split System Air Conditioner

Yukon, a new split-type floor-standing air conditioner from Trane, the leading expert of air conditioning systems from USA. This product has been designed and developed with a compact size in mind, making installation and maintenance easy. The unit's stylish appearance is also meant to be suitably applied to a variety of usages – from dining rooms, ballrooms or exhibition rooms. It provides you with a maximized BTU according to Trane's

## The New Stylish Control Panel



- Digital room thermostat allowing the temperature to be set from 15 to 30°C.
- On/off timings can be programmed up to 15 hours in advance.
- 3-minute delay function to protect the compressors.



## Indoor Unit

- New compact design that fits well for a variety of usages.
- New electronic thermostat digitally displays the room temperature with 7-segments LED which is easy to use.
- Offers a silent operation with the Single Inlet Centrifugal Fan.
- Fan speed can be adjusted to four different levels (high, medium, low and automatic).
- Auto Swing Function for vertical grills (left-right direction) to better distribute the cooled air.
- The front unit can be opened, making it easy for maintenance to be carried out without any space constraints.

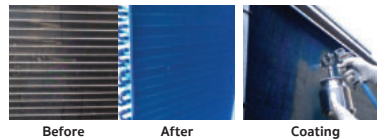
## Outdoor Unit

- The design of the outdoor unit is well thought out. The unit is durable thanks to an iron plate which is phosphatized and painted with polyester powder.
- The compressors used have been tested with standard-compliance tests and are trustworthy.
- Effective performance guaranteed by Trane's design standards.
- Certified with TIS 2134-2553 (for the models with capacities of 40,000 Btu/h or less).
- The TTK model is hot air side-discharged type equipped with Shut-Off Valves uses R32 refrigerant.
- The TTA model is hot air side-discharged type equipped with Shut-Off Valves uses the R-410A refrigerant.

## • Voltage / Phase Protection

The design of the outdoor unit is well thought out. The unit is durable thanks to an iron plate which is phosphatized and painted with polyester powder.

## Anti-corrosive coatings (optional)



TR-DTM helps to slow down coil corrosion caused from exposure to corrosive environments such as the seaside or from chemicals in industrial factories. It passes the Salt-Spray Test under the ASTM B117 standard for more than 5,000 – 10,000 hours.



TTKA36-B60



TTA 075-120



TTA 150-240

## Product Specifications

Models	Indoor unit	MCVB36BB	MCVB36BB	MCVB48BB	MCVB48BB	MCVB60BB	MCV090JB	MCV090JB	MCV120JB	2xMCV090JB	2xMCV090JB	2xMCV090JB	2xMCV120JB		
	Outdoor unit	TTKA36KB	TTKA36KB	TTKB42KD	TTKB48KD	TTKB60KD	TTA075JD	TTA100JD	TTA120JD	TTA150JD	TTA180JD	TTA200JD	TTA240JD		
Performance Data	Nominal Capacity	Btu/h	36,000	36,000	42,000	48,000	60,000	75,000	100,000	120,000	150,000	180,000	195,000	240,000	
	Airflow	cfm	1,200	1,200	1,600	1,600	2,000	3,000	3,000	4,000	6,000	6,000	6,000	8,000	
<b>Indoor Units</b>															
Electrical Data	Power Supply	V/ph/Hz	220-240/1/50												
Fan Motor	RLA x Qty	A	1.78	1.78	2.34	2.34	3.42	1.78x2	1.78x2	2.34x2	1.78x4	1.78x4	1.78x4	2.34x4	
Control Type	Digital Thermostat	Standard	•	•	•	•	•	•	•	•	•	•	•	•	
Dimensions	H x W x D (Each)	mm	1,900x600x370				1,900x848x400		1,900x1,196x400						
Weight (Each)	Uncrated (Net)	kg	64	64	68	68	90	136	136	143	136x2	136x2	136x2	143x2	
<b>Outdoor Units</b>															
Electrical Data	Power Supply	V/ph/Hz	220-240/1/50				380-415/3/50								
Expansion Device			Capillary Tube				Thermostatic Expansion Valve								
Compressor	Type		Rotary				Scroll								
	RLA x Qty	A	12.5	4.5	5.0	8.9	9.9	17.9	17.9	21.4	17.8x2	18.6x2	20.0x2	25.0x2	
Fan Motor	RLA x Qty	A	0.50	0.50	1.65	1.65	0.75x2	1.5	1.5	1.5	1.5x2	1.5x2	1.5x2	1.5x2	
Dimensions	H x W x D	mm	795x1,018x360				1,254x988x350		1,070x1,042x953			1,050x2,200x1,050			
Weight	Uncrated (Net)	kg	82	82	86	90	100	170	186	199	382	415	428	462	
Piping Connection Type			Shut Off Valve – Flare Type				Shut Off Valve – Sweat Type								
Refrigerant Pipe Size	Suction	in	5/8		3/4		1-1/8	1-1/8	1-3/8	1-1/8	1-1/8	1-1/8	1-1/8	1-3/8	
	Liquid	in	3/8				1/2								
Refrigerant			R32				R410A								

NOTE: 1. Test at ARI system rating conditions 80°F-DB/67°F-WB indoor & 95°F-DB outdoor 2. Outdoor unit's width and depth do not include the size of the mounting feet. For more detail, please see the drawing in the installation manual.  
3. Product design and specification are subject to change without notice.



Trane – by Trane Technologies (NYSE: TT), a global climate innovator – creates comfortable, energy efficient indoor environments through a broad portfolio of heating, ventilating and air conditioning systems and controls, services, parts and supply. For more information, please visit [tranethailand.com](http://tranethailand.com).

All trademarks referenced in this document are the trademarks of their respective owners.

## Trane (Thailand)

1126/2, 30<sup>th</sup>-31<sup>st</sup> Fl., Vanit Building 2, New Petchburi Road, Makkasan, Ratchthevee, Bangkok, 10400

☎ 0-2761-1111



@tranethailand



FB/tranethailand



www.tranethailand.com